

CASE STUDY

Seamless speed and precision



CLIENT

Palmer Johnson

VESSEL

49m/ 161ft *M/Y Khalilah*

LOCATION

Monaco

SYSTEM

Submarine Anchor
System

ANCHOR TYPE

Submarine Anchor (HHP)

ANCHOR WEIGHT

325kg/ 715lbs

MATERIAL

316L Stainless Steel

Challenge

When the 49m / 160.7ft SuperSport Motor Yacht *Khalilah* was built by Palmer Johnson it required an anchor deployment system that was reliable and robust enough to work on a yacht with an axe bow and that could travel up to 40 knots. For such a task, Palmer Johnson turned to long time partner Manson Anchors to build the anchors, and Bowmaster to develop the system.

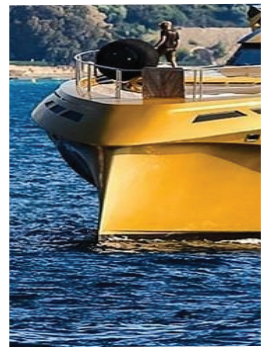
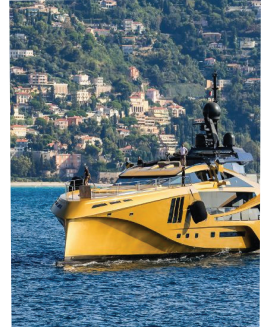
Solution

The unique shape of the bow on *M/Y Khalilah* had a major influence on the anchor system to be used. Although not always the most conventional way to anchor a vessel of this size, the patented Submarine Anchor System was clearly the most appropriate for the boat. This solution offered a sleek look with no anchor pockets ensuring the streamlined style of the vessel was retained

To meet the client's needs the team designed a Submarine Anchor System that could stand up to the pressure applied by nearly 40 knots of speed in variable sea states. Through frequent communication and collaboration, this solution surpassed all expectations and was agreed.

Once the final designs were signed off, the highest quality materials were sourced in accordance with DNVGL certification.

Prototype testing allowed Bowmaster to be sure that the approach was accurate. The system was stressed and tested at Bowmaster's purpose built facility to confirm its reliability in all conditions.



The final build was then commissioned and shipped to the client for installation.

The result was a bespoke, functional, and most importantly robust piece of anchor equipment that the captain and crew could rely on, and be proud of.

PHOTOS COURTESY
SuperYacht Times

DESIGN IMAGES
Bowmaster Design
Team

FACTORY IMAGES
Bowmaster
Fabrication Team

